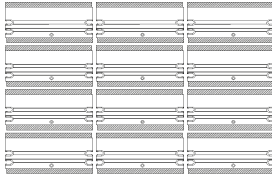




# TRAVERTINA RAW

**DESCRIPTION:** Double-sided wall **TEXTURE:** Brushed Travertine

## Pallet Overview



Brushed Travertine  
Rock Garden Brown

Brushed Travertine  
Ivory

Brushed Travertine  
Riviera

## Specifications per pallet



48 units / pallet

	Imperial	Metric
Product dimension (L x D x H)	15 7/8 x 7 15/16 x 6	403 x 202 x 152
Cubing	31.75 ft <sup>2</sup>	2.95 m <sup>2</sup>
	63.5 lin. ft	19.36 lin. m
Approx. Weight	2 902 lbs	1 316 kg
Number of rows	4	
Coverage per units	0.66 ft <sup>2</sup>	0.06 m <sup>2</sup>
Coverage per row	7.94 ft <sup>2</sup>	0.74 m <sup>2</sup>
Linear coverage per row	15.88 lin. ft	4.84 lin. m

## NOTES

See page 6 for icons description.

### COMPATIBLE CAPS

See page 145 for product compatibility.


The dimensional tolerance for Stonedge wet cast retaining wall units is: + 3/16" (5 mm) for height and + 1/2" (13 mm) for length and width. During the installation, the level between adjacent wall units will vary (usually more than for a dry cast wall unit) in order to obtain a more realistic appearance of a natural stone wall.

See page 146 to 161 for more technical information.



# TRAVERTINA RAW

**DESCRIPTION:** Corner/Pillar **TEXTURE:** Brushed Travertine

Specifications per pallet	Imperial	Metric
 Product dimension (L x D x H)	15 7/8 x 7 15/16 x 6	403 x 202 x 152
Cubing	24 units	24 units
Approx. Weight	1 576 lbs	715 kg
Number of rows	2	
Pillar height	36 in	914 mm

24 units / pallet

## Pallet Overview



Rock Garden Brown

Brushed Travertine



Ivory

Brushed Travertine



Riviera

Brushed Travertine



## NOTES

See page 6 for icons description.

See page 146 to 161 for more technical information.

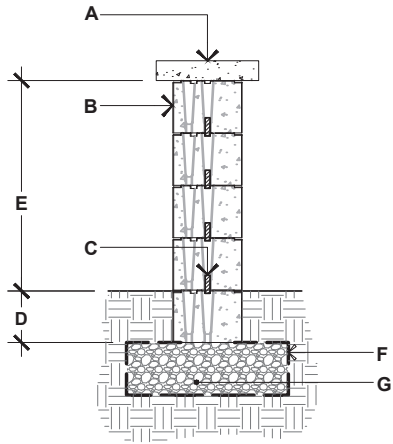
### COMPATIBLE CAPS

See page 145 for product compatibility.

The dimensional tolerance for Stonedge wet cast retaining wall units is: + 3/16" (5 mm) for height and + 1/2" (13 mm) for length and width. During the installation, the level between adjacent wall units will vary (usually more than for a dry cast wall unit) in order to obtain a more realistic appearance of a natural stone wall.

# INSTALLATION GUIDE

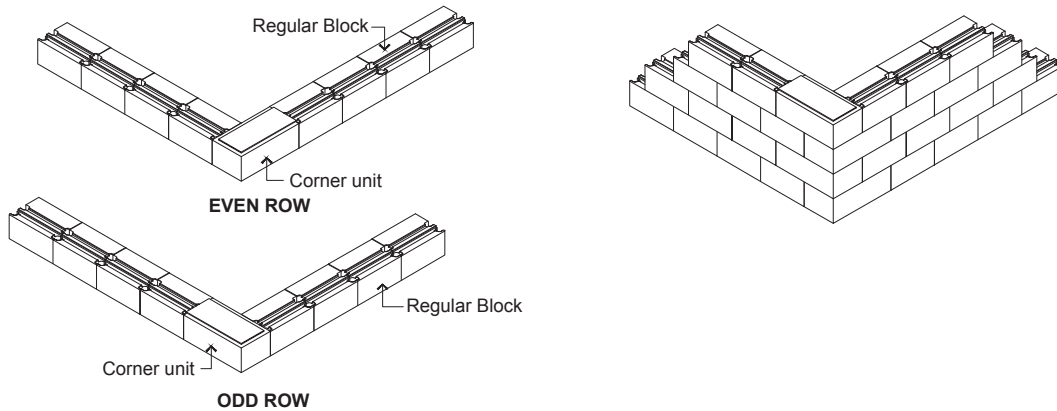
## FREESTANDING WALLS - TRAVERTINA RAW



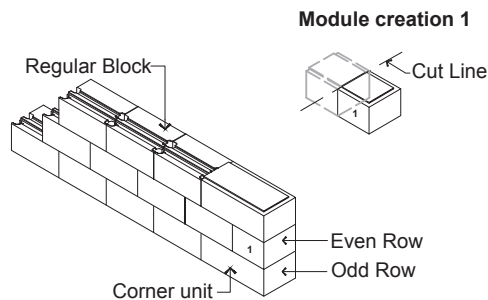
### TRAVERTINA RAW

- A. TECHO-BLOC CAP UNIT, SECURED TO UNIT BELOW WITH CONCRETE ADHESIVE
- B. TRAVERTINA RAW DOUBLE-SIDED WALL UNIT SECURE EACH ROW WITH CONCRETE ADHESIVE
- C. CONNECTOR
- D. EMBEDMENT DEPTH, 6" (150 mm) MIN.
- E. 24" (612 mm) MAX.
- F. GEOTEXTILE
- G. COMPACTED GRANULAR LEVELING PAD, 6" (150 mm) THICK MIN. THICKNESS ACCORDING TO PROJECT SPECIFIC CONDITIONS

## 90° CORNER OF A DOUBLE-SIDED WALL



## DOUBLE-SIDED WALL - END OF A STRAIGHT WALL

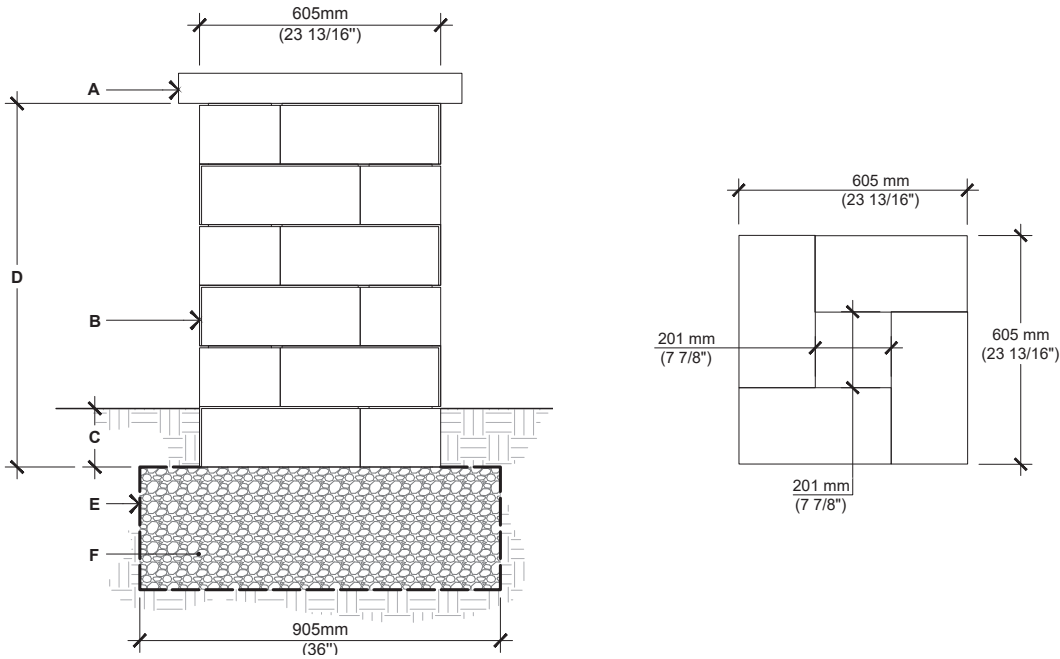


### GENERAL NOTES

1. Alternate odd and even rows.
2. Stagger joints from one row to the next.
3. Glue all modules at each row with Flexlock adhesive.

# INSTALLATION GUIDE

## PILLARS - TRAVERTINA RAW

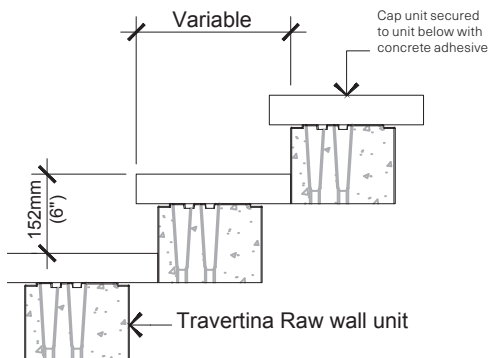


### TRAVERTINA RAW

- A. PILLAR CAP UNIT  
(SECURE WITH CONCRETE ADHESIVE)
- B. TRAVERTINA RAW PILLAR UNIT  
SECURE EACH ROW WITH CONCRETE ADHESIVE
- C. EMBEDMENT 6" (150 mm) MIN.
- D. 36" (917 mm), HEIGHT PER PALLET  
42" (1067 mm), MAXIMUM HEIGHT
- E. GEOTEXTILE
- F. COMPACTED GRANULAR BASE 6" (150mm)  
THICK MIN. THICKNESS ACCORDING TO  
PROJECT SPECIFIC CONDITIONS

For all possible combinations of pillars and caps, please refer to the correspondence table on page 145

### STEPS



For all possible combinations of walls and caps, please refer to the correspondence table on page 145

Check with your local Building Codes to determine any restrictions or guidelines regarding the dimensions of steps (including riser height and step tread) as well as handrail specifications.