




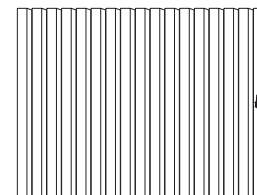
# MAYA

DESCRIPTION: Slab Texture: Slate



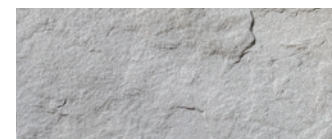
Specifications per pallet	Imperial	Metric
 Product dimension (L x W x H)	31 x 23 x 2 ¼	788 x 584 x 57
Cubing	17 units	17 units
17 units / pallet	Approx. Weight per pallet	1 695 lbs / 769 kg
	Approx. Weight by unit	89 lbs / 41 kg
	Number of rows	1
	Coverage per unit	4.95 ft <sup>2</sup> / 0.46 m <sup>2</sup>
	Coverage per pallet	84.15 ft <sup>2</sup> / 7.82 m <sup>2</sup>

## Pallet Overview



Natural stone

Victoria



Natural stone

Riviera



## NOTES

Palletized upright.

It is preferable to lay the stones in a random configuration.

Each pallet contains a variation of four different shapes.

\*For an authentic look, each color option is composed of a variety of darker & lighter tones. Natural ingredients such as granite are present within the recipe to allow for a range in tones, veining and textures from one stone to another.

In order to obtain a more realistic appearance to natural stone, wet cast (Stonedge collection) slabs

are intended to have a slightly larger variance in their dimensions than dry cast slabs. See Notes for dimensional tolerances on page 34.

See page 6 for icons description.

See page 26 for more information about applications.

See page 34 to 36 for more technical information.

Please note that for barefoot walking areas (e.g. pool deck) dark-colored paving units could get very hot under the sun.