




BOREALIS Wall

DESCRIPTION: Wall    TEXTURE: Wood

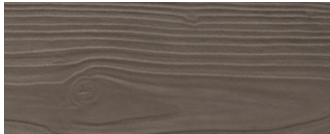
Specifications per pallet		Imperial	Metric
 16 units / pallet	Product dimension (L × D × H)	48 × 8 × 6	1 219 × 203 × 152
	Cubing	32 ft²	2.97 m²
	Linear coverage per pallet	64 lin. ft	19.51 lin. m
	Approx. Weight	3 042 lbs	1 380 kg
	Number of rows	4	
	Coverage per row	8 ft²	0.74 m²
	Coverage per unit	2 ft²	0.19 m²
	Linear coverage per unit	4 lin. ft	1.22 lin. m

Pallet Overview

A

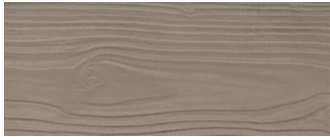
Smoked Pine

Wood



Hazelnut Brandy

Wood



NOTES

\*For an authentic look, each color option is composed of a variety of darker & lighter tones. Natural ingredients such as granite are present within the recipe to allow for a range in tones, veining and textures from one stone to another.

The dimensional tolerance for Stonedge wet cast retaining wall units is: ± 3/16" (5 mm) for height and ± 1/2" (13 mm) for length and width. During the installation, the level between adjacent wall units

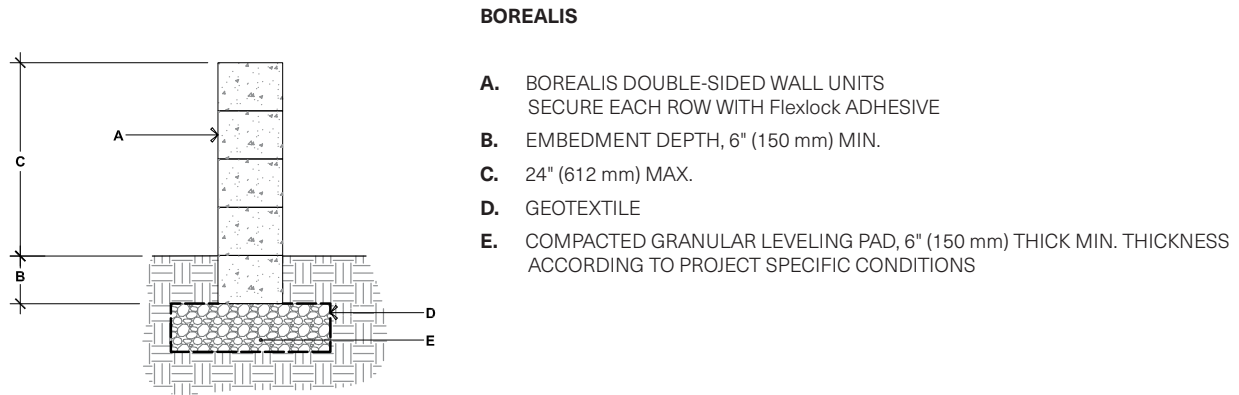
will vary (usually more than for a dry cast wall unit) in order to obtain a more realistic appearance of a natural stone wall.

See page 6 for icons description.

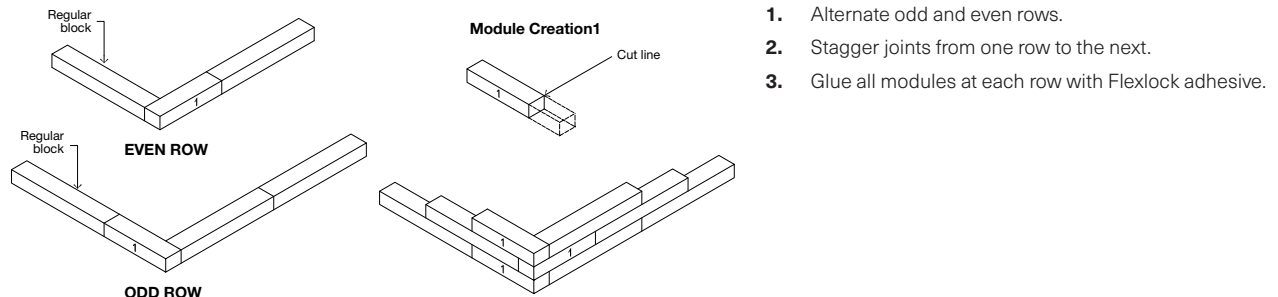
See page 138 to 153 for more technical information.

# INSTALLATION GUIDE

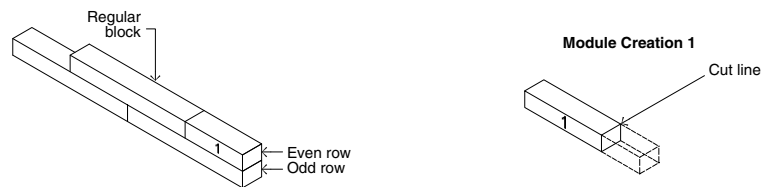
## FREESTANDING WALLS- BOREALIS



## 90° CORNER OF A DOUBLE-SIDED WALL

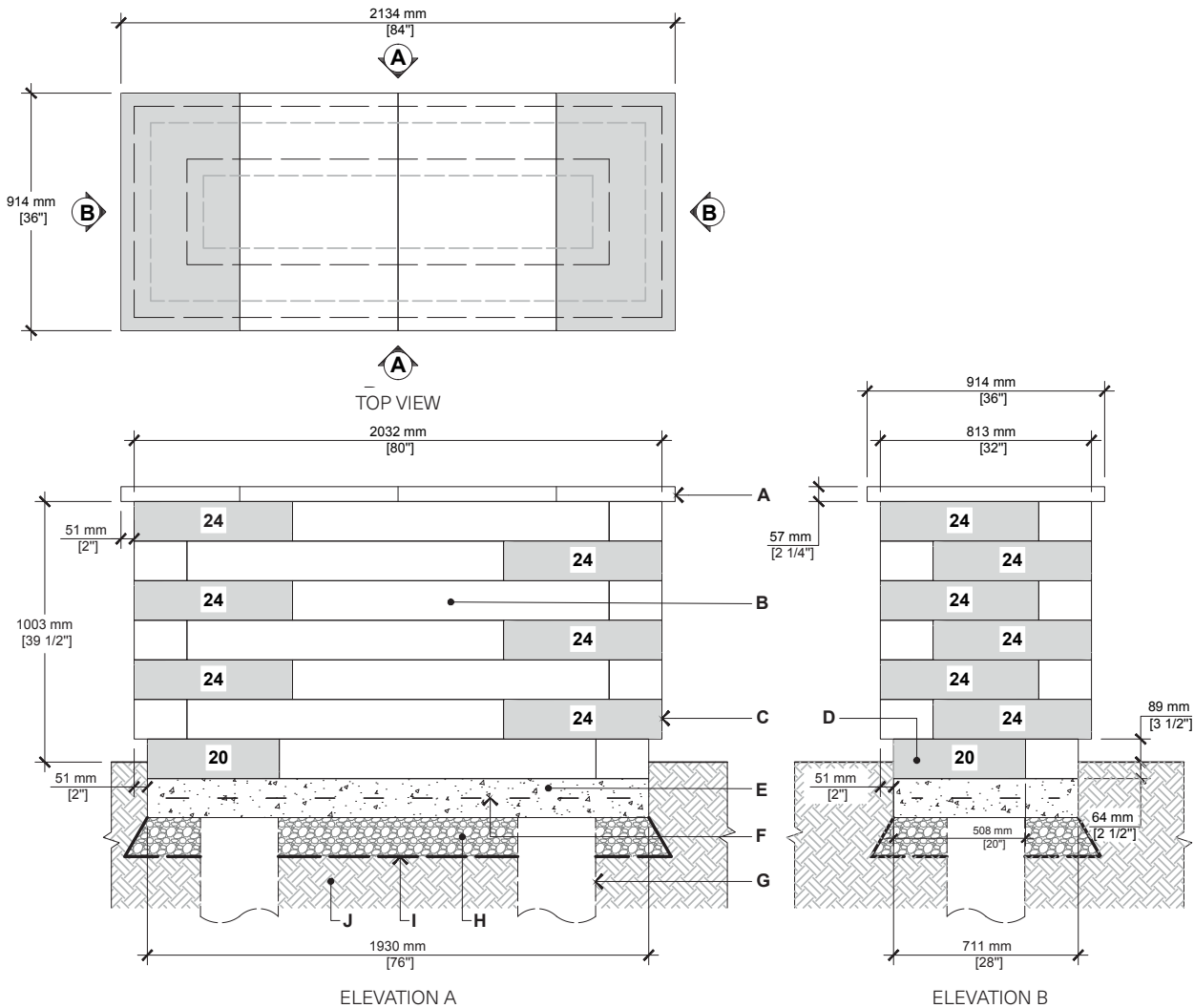


## DOUBLE-SIDED WALL - END OF A STRAIGHT WALL



# INSTALLATION GUIDE

## GRILL ISLAND - BOREALIS



- A.** YORK COUNTER TOP 24" X 36" X 2 1/4" (CUT ON FIELD AS REQUIRED)
- B.** BOREALIS WALL UNIT
- C.** BOREALIS WALL UNIT CUT IN HALF (CUT ON FIELD)
- D.** BOREALIS WALL UNIT (CUT ON FIELD AS REQUIRED)
- E.** CAST IN PLACE CONCRETE SLAB 4350 psi (30 MPa), 5" (125 mm) THICK
- F.** 4X4-4/4 (102X102-MW25.8XMW25.8) WELDED WIRE MESH AND/OR REBAR AS PER SITE CONDITIONS
- G.** 12" (300 mm) DIA. CONCRETE PILLAR, AS PER LOCAL CODE
- H.** 3/4" (20 mm) CLEAN STONE 6" (150 mm) THICK MIN. AS PER SITE CONDITIONS
- I.** GEOTEXTILE
- J.** NATURAL SOIL OR COMPACTED BACKFILL

### QUANTITY OF MATERIALS REQUIRED

- York Counter top 24" x 36" x 2 1/4": **4**
- Borealis wall unit: **28**

**NOTE:** Appliances and utilities may vary for each project and are not shown on this drawing. This drawing is shown for inspiration only and surplus or shortage of materials may result. It is the user's responsibility to verify for the quantity of materials required. Secure the blocks using a heat resistant concrete adhesive. The installer must ensure that the installation and use of the grill island comply with local regulations and code requirements. Concrete pillars extending to frost line may be required as per local code. Check your local building code before installing.